



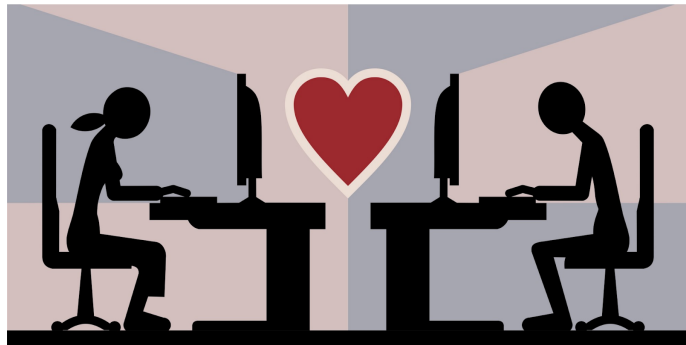
Online Dating for the LGBTQ Community

Online dating is a common way for adults to find romantic partners. Especially for LGBTQ users, finding romantic partners online became a popular alternative to cruising bars. Nowadays, more and more professional online dating systems appear and help LGBTQ users to find romantic partners more efficiently. However, little is known about their dating motivations, behaviors, and self-presentations.

In this thesis, we explore how people present themselves on different online dating platforms and how they interact with each other. We will provide a data-set of dating profiles and interactions of Chinese users for analyzing their dating motivations, behaviors, and self-presentations.

Requirements: Strong motivation, proficiency in Python & PyTorch, and prior knowledge in Nature Language Processing and Chinese Language.

We will have weekly meetings to address questions, discuss progress, and think about future ideas.



Interested? Please contact us for more details!

Contact

- Ye Wang: wangye@ethz.ch, ETZ G63
- Zhao Meng: zhmeng@ethz.ch, ETZ G61.3