

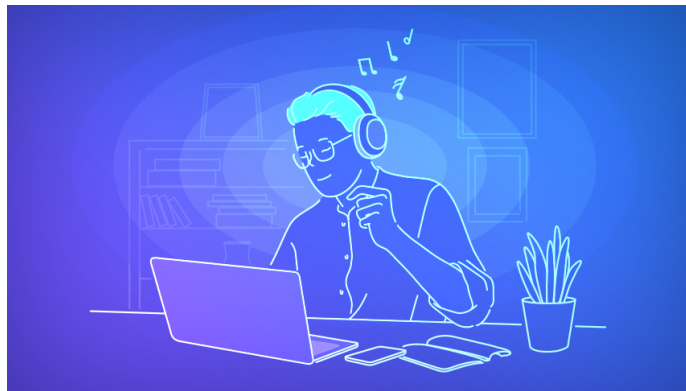


Bring Your Own Idea: Music, Artists, and Graphs

Music is a constant companion. We listen to it while commuting, studying, working, working out, and maybe even while sleeping. But why do we listen to what we listen to? Is genre similarity the only thing that binds artists in similarity or is there more to it?

As a by-product of our research we have collected a dataset of 400000 music artists, containing everything from Rachmaninoff to Megadeth, and their relationship graph. Using the Spotify API we collected the related artists of artists. This relationship is based on artist similarity, where similarity is determined algorithmically through factors such as shared fans and similar keywords. We also collected various metadata for each artist, such as their follower counts, popularity scores and biggest hits.

We are looking for a student that has an interesting idea what could be done with this data, for example questions that could be analyzed and answered, specific new insights that could be gathered by data analysis, or even more out-of-the-box ideas. This is where you come in. If you want to work with this data and have a cool idea, let's talk!



Requirements: Ability to work independently and determined to obtain results, creative thinking, knowledge with graphs and Python.

We will have weekly meetings to address questions, discuss progress and think about future ideas.

Contact

- Luca Lanzendörfer : lanzendoerfer@ethz.ch, ETZ G93